

0640P-OP-0854-0644-15  
08133 - 08134 - 38 - 006 2

## Test Report

No.: E08291004809C

Date: 2011.09.14

Page 1 of 5

### Applicant:

The following sample(s) was/were submitted and identified on behalf of the client as:

Sample Name: drum

Age Group Applied in Testing: 3 years<sup>+</sup>

Sample Received Date: 2011.08.29

Testing Period: 2011.08.29 to 2011.09.14

### Test requested:

- (1) EN 71-1:2011: Mechanical and Physical Properties;
- (2) EN71-2: 2006 +A1:2007: Flammability;
- (3) EN71-3: 1994 + A1:2000 + AC:2002: Migration of Certain Elements.

### Test results:

Please refer to next page(s)

Approved by:

Code: hxhim21

## Test results

EN71 Part 1 Mechanical and Physical Properties

4	General Requirements	
4.1	Material cleanliness.....	PASS
4.2	Assembly.....	N/A
4.3	Flexible plastic sheeting.....	N/A
4.4	Toy bags.....	N/A
4.5	Glass.....	N/A
4.6	Expanding materials.....	N/A
4.7	Edges.....	PASS
4.8	Points and metallic, wires.....	PASS
4.9	Protruding parts.....	N/A
4.10	Parts moving against each other.....	N/A
4.11	Mouth-actuated toys and other toys intended to be put in the mouth.....	N/A
4.12	Balloons.....	N/A
4.13	Cords of toy kites and other flying toys.....	N/A
4.14	Enclosures.....	N/A
4.15	Toys intended to bear the mass of a child.....	N/A
4.16	Heavy immobile toys.....	N/A
4.17	Projectiles.....	N/A
4.18	Aquatic toys and inflatable toys.....	N/A
4.19	Percussion caps specifically designed for use in toys and toy using percussion caps.....	N/A
4.20	Acoustics.....	N/A
4.21	Toys containing a non-electrical heat source.....	N/A
4.22	Small balls.....	N/A
4.23	Magnets.....	N/A
4.24	Yo-yo balls.....	N/A
4.25	Toys attached to food .....	N/A

# Test Report

No.: E08291004809C

Date: 2011.09.14

Page 3 of 5

5	Toys intended for children under 36 months	
5.1	General requirements.....	PASS
5.2	Soft-filled toys and soft-filled parts of a toy.....	N/A
5.3	Plastic sheeting.....	N/A
5.4	Cords, chains and electrical cables in toys.....	N/A
5.5	Liquid-filled toys.....	N/A
5.6	Speed limitation of electrically-driven ride-on toys.....	N/A
5.7.	Glass and porcelain.....	N/A
5.8.	Shape and size of certain toys.....	N/A
5.9.	Toys comprising monofilaments fibers.....	N/A
5.10.	Small balls.....	N/A
5.11.	Play figures.....	N/A
5.12.	Hemispheric-shapes toys.....	N/A
5.13.	Suction cups.....	N/A
5.14.	Straps intended to be worn fully or partially around the neck (see A.53) .....	N/A
6	Packaging.....	N/A
7	Warning, markings and instructions for use.....	#
7.1	General.....	N/A
7.2	Toys not intended for children under 36 months.....	N/A
7.3	Latex balloons.....	N/A
7.4	Aquatic toys .....	N/A
7.5	Functional toys .....	N/A
7.6	Hazardous sharp functional edges and points .....	N/A
7.7	Projectiles .....	N/A
7.8	Imitation protective masks and helmets .....	N/A
7.9	Toy kites .....	N/A
7.10	Roller skates, inline skates, skateboard and certain other ride-on toys.....	N/A
7.11	Toys intended to be attached to or strung across a cradle, cot, or perambulator.....	N/A
7.12	Liquid-filled teethers .....	N/A
7.13	Percussion caps specifically designed for use in toys .....	N/A
7.14	Acoustics .....	N/A
7.15	Toy bicycles .....	N/A
7.16	Toys intended to bear the mass of a child .....	N/A

# Test Report

No.: E08291004809C

Date: 2011.09.14

Page 4 of 5

- 7.17 Toys comprising monofilament fibres .....N/A
- 7.18 Toy scooters.....N/A
- 7.19 Rocking horses and similar toys .....N/A
- 7.20 Magnetic/electrical experimental sets.....N/A
- 7.21 Toys with electrical cables exceeding 300 mm in length .....N/A
- 7.22 Toys with cords or Chains intended for children of 18 months and over but under 36months.N/A

## EN71 Part 2 Flammability

- 4.1 General..... PASS
- 4.2 Toys to be worn on the head .....N/A
- 4.3 Toy disguise costumes and toys intended to be worn by a child in play..... N/A
- 4.4 Toys intended to be entered by a child.....N/A
- 4.5 Soft-filled toys with a piled or textile surface.....N/A

## EN71 Part 3 Migration of certain elements

The migrations of elements from toys and parts of toys..... Pass

Test result (mg/kg):

Test Item	Sb	As	Ba	Cd	Cr	Pb	Hg	Se
Required limit	60	25	1000	75	60	90	60	500
Test Result	skin of the drum	< 1	< 1	< 1	< 1	< 1	< 1	< 1
	black belt	< 1	< 1	< 1	< 1	< 1	< 1	< 1
	clear varnish	< 1	< 1	< 1	< 1	< 1	< 1	< 1
	red belt	< 1	< 1	65.9	< 1	6.87	< 1	< 1
	blue paint	< 1	< 1	3.28	< 1	3.68	< 1	< 1

Test Component:

Note: (1) mg/kg = ppm

(2) < = Less than

(3) N/A = Not Applicable

(4) # Toys made available on the market must bear the CE marking. The CE marking is subject to the general principles set out in Article 30 of Regulation (EC) No 765/2008. the manufacture's and importer's name, registered trade name or registered trade mark, the address and the CE- marking shall be indicated on the toy, or where that is not possible, on its packaging or in a document accompany the toy, as specified in Clause 7.

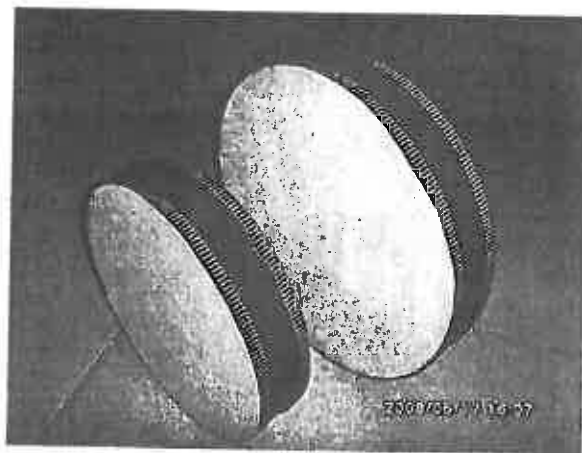
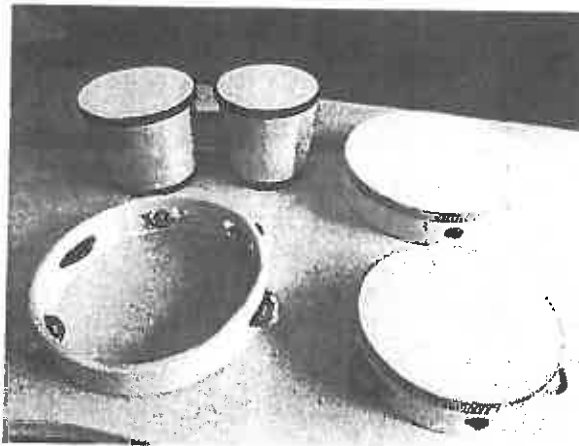
# Test Report

No.: E08291004809C

Date: 2011.09.14

Page 5 of 5

Photo:



Pony authenticate the photo on original report only

\*\*\*End of report\*\*\*